

NUEVA COLECCIÓN NEW COLLECTION





Visita la colección











Visit the collection

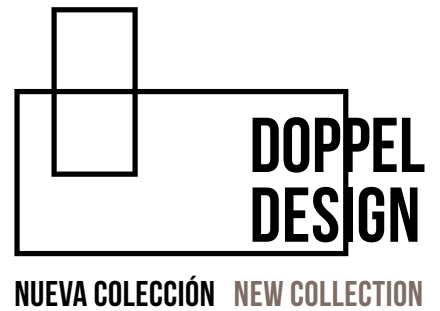


HISPANO ITALIANA DE REVESTIMIENTOS S.A.

Barrio Borrancho, s/n°.
39110 Soto de la Marina . Cantabria . España
tel.: +34 942 578 006 | comercial@hisbalit.es
www.hisbalit.com

 facebook.com/hisbalit
 x.com/HISBALITmosaico
 instagram.com/hisbalit
 pinterest.com/hisbalit

 tiktok.com/@hisbalit
 youtube.com/channel/Hisbalitmosaico
 houzz.es/pro/hisbalitmosaic
 linkedin.com/company/hisbalit-mosaico



Descubre la primera colección de diseños con mosaico rectangular Doppel. Modelos creativos con efecto hipnótico en tonos cálidos y atemporales.

Rectángulos de proporciones exactas 1:2 juegan con cambios de orientación y fusión de colores convirtiéndose en rombos, triángulos, cuadrados, ondas y figuras en movimiento, consiguiendo geometría, proporción, orden y equilibrio.

Formato y acabado disponible:
Available format and finish:



Discover the first collection of designs with rectangular Doppel mosaic tile. Creative models with a hypnotic effect in warm, timeless colours.

Rectangles of exact proportions 1:2 enable a combination of orientations and a fusion of colours, creating rhomboids, triangles, squares, waves and figures in movement, achieving a sensation of geometry, proportion, order and balance.



⚠ El espesor de las piezas de esta colección es de 5mm frente a los 4mm que tienen el resto de colecciones.

Tenga en cuenta que en instalaciones que combinen la Colección Doppel con otras del catálogo se observarán diferencias de calibre.

Medidas tesela: 2,3 x 4,7cm.
Medidas malla: 33,33 x 33,33cm.

⚠ The thickness of the pieces in this collection is 5mm, whereas the thickness of the pieces in the other collections is 4mm. Please be aware that there are differences in sizes between the Doppel Collection and the other collections in the catalogue.

Tessarea's measures: 2,3 x 4,7cm.
Measures of mesh: 33,33 x 33,33cm.

HISBALIT



569



573



564



570



568



575



576



574



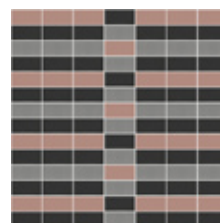
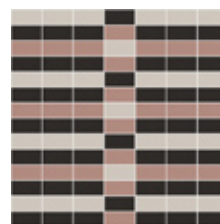
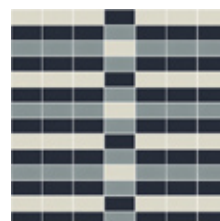
DOPPEL
DESIGN

4

Motivos sobrios y elegantes que conjugan tradición y modernidad. Diseños minimalistas en colores cálidos ligados a la naturaleza: grises, azules, marrones, beiges, tierras, blancos y negros. Tonos armónicos y atemporales en acabado mate para conseguir superficies estéticas y con carácter.

11 modelos con efecto 3D, presentados con tres variantes cromáticas, y que pueden personalizarse con cualquiera de las referencias de la colección Doppel.

Sober, elegant motifs which combine tradition and modernity. Minimalist designs in warm colours associated with nature: greys, blues, browns, beiges, earthy tones, black and white. Harmonious and timeless colours in a matte finish for aesthetic surfaces with character and charm. 11 models with a 3D effect, and three chromatic variants that can be personalised using any of the references from the Doppel collection.



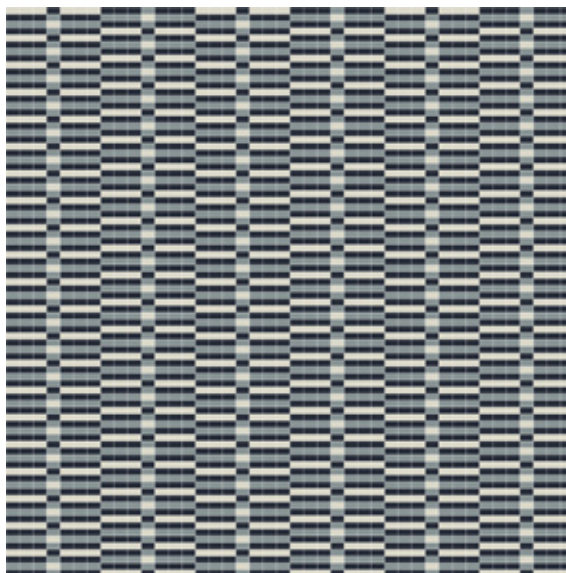


6

METRISCH

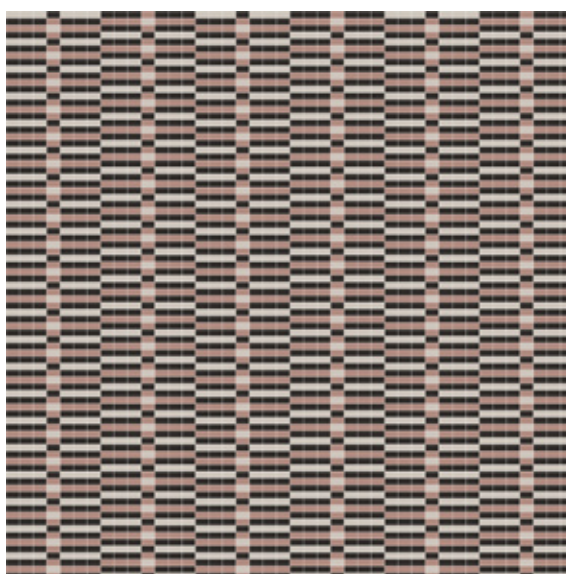
UN DISEÑO MÉTRICO EN RELIEVE.

A METRIC DESIGN IN RELIEF.



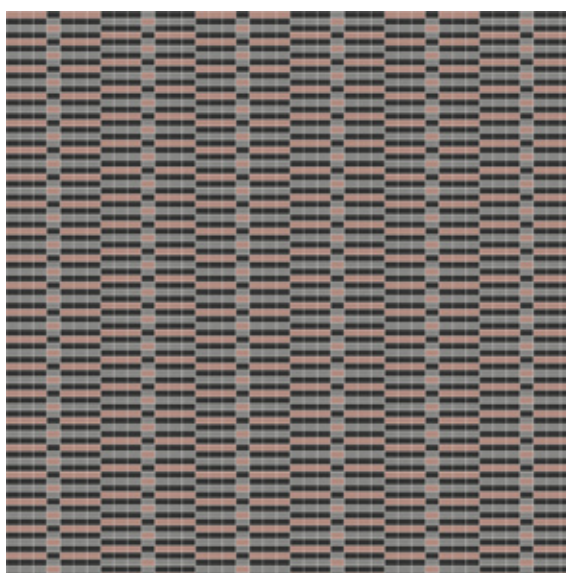
METRISCH 1

568 569 573



METRISCH 2

575 576 564



METRISCH 3

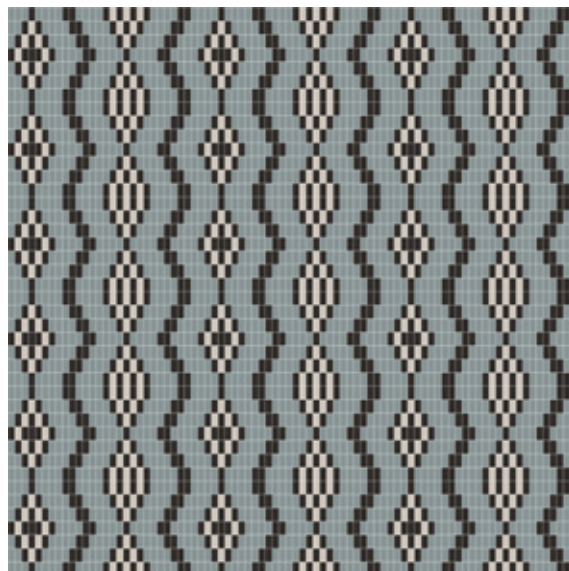
576 570 564



8

WELLEN

LA BELLEZA DE LAS ONDAS EN VERTICAL.
THE BEAUTY OF VERTICAL WAVE PATTERNS.



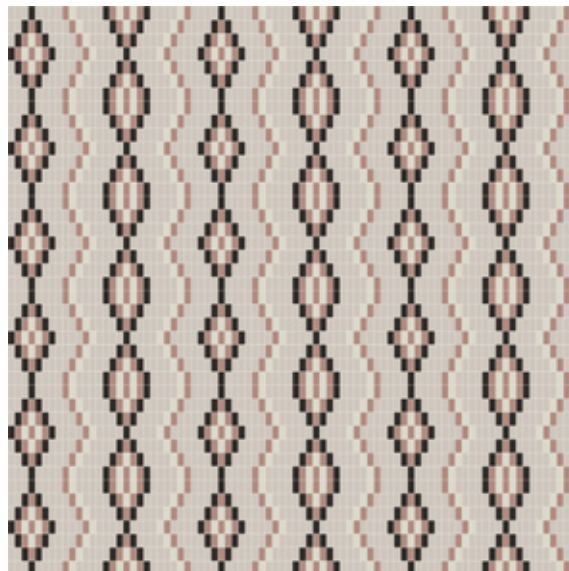
WELLEN 1

575 569 564



WELLEN 2

568 569 575 573



WELLEN 3

568 576 575 574

ZAPFEN

TRIÁNGULOS Y ROMBOS EN CONTRASTE.
TRIANGLES AND RHOMBOIDS IN CONTRAST.





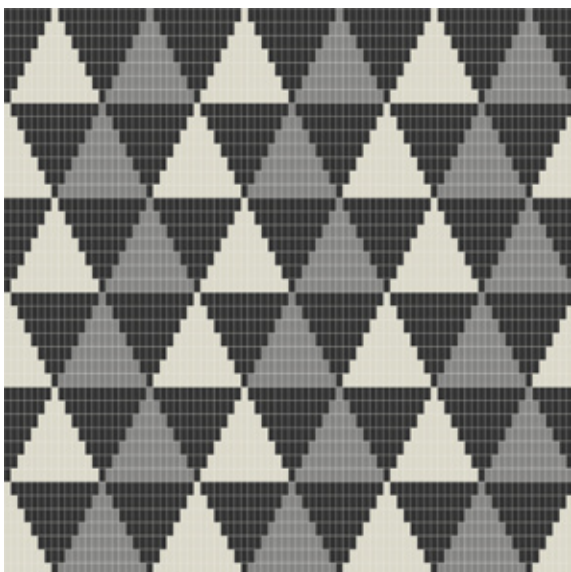
ZAPFEN 3

573 569 575



ZAPFEN 2

568 576 575



ZAPFEN 1

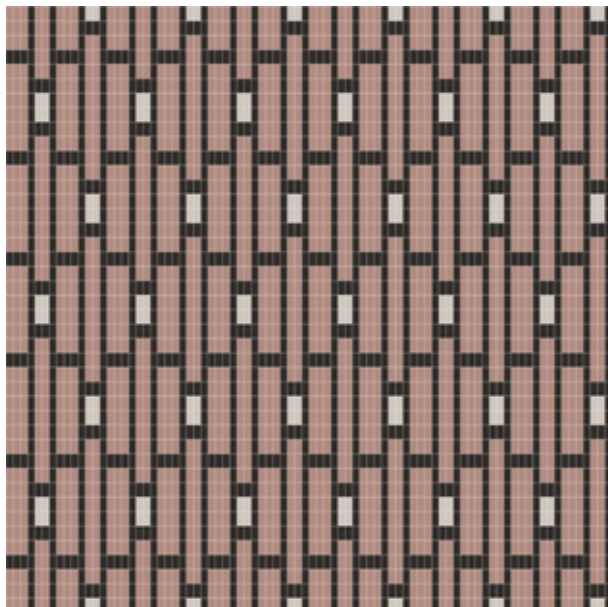
568 570 564



LINIEN

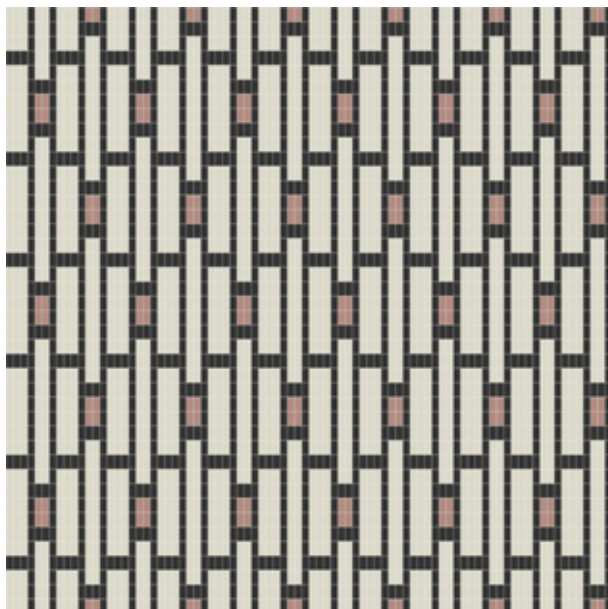
LÍNEAS QUE FORMAN RECTÁNGULOS EN EQUILIBRIO.

LINES THAT CREATE BALANCED, RECTANGULAR PATTERNS.



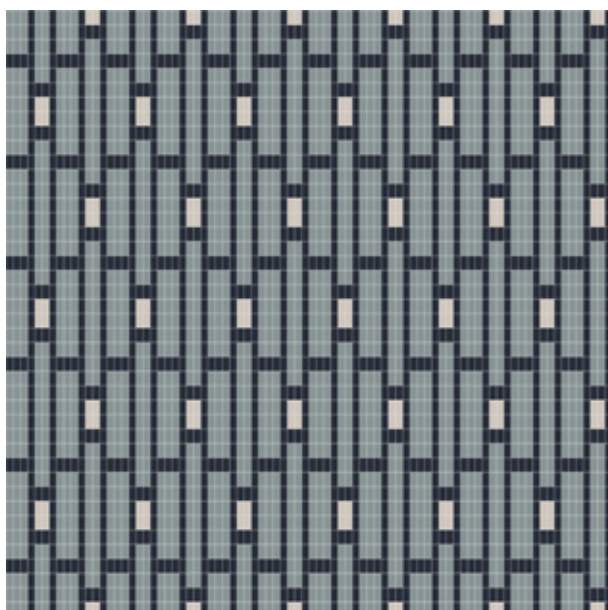
575 576 574

LINIEN 1



568 576 564

LINIEN 2



575 569 573

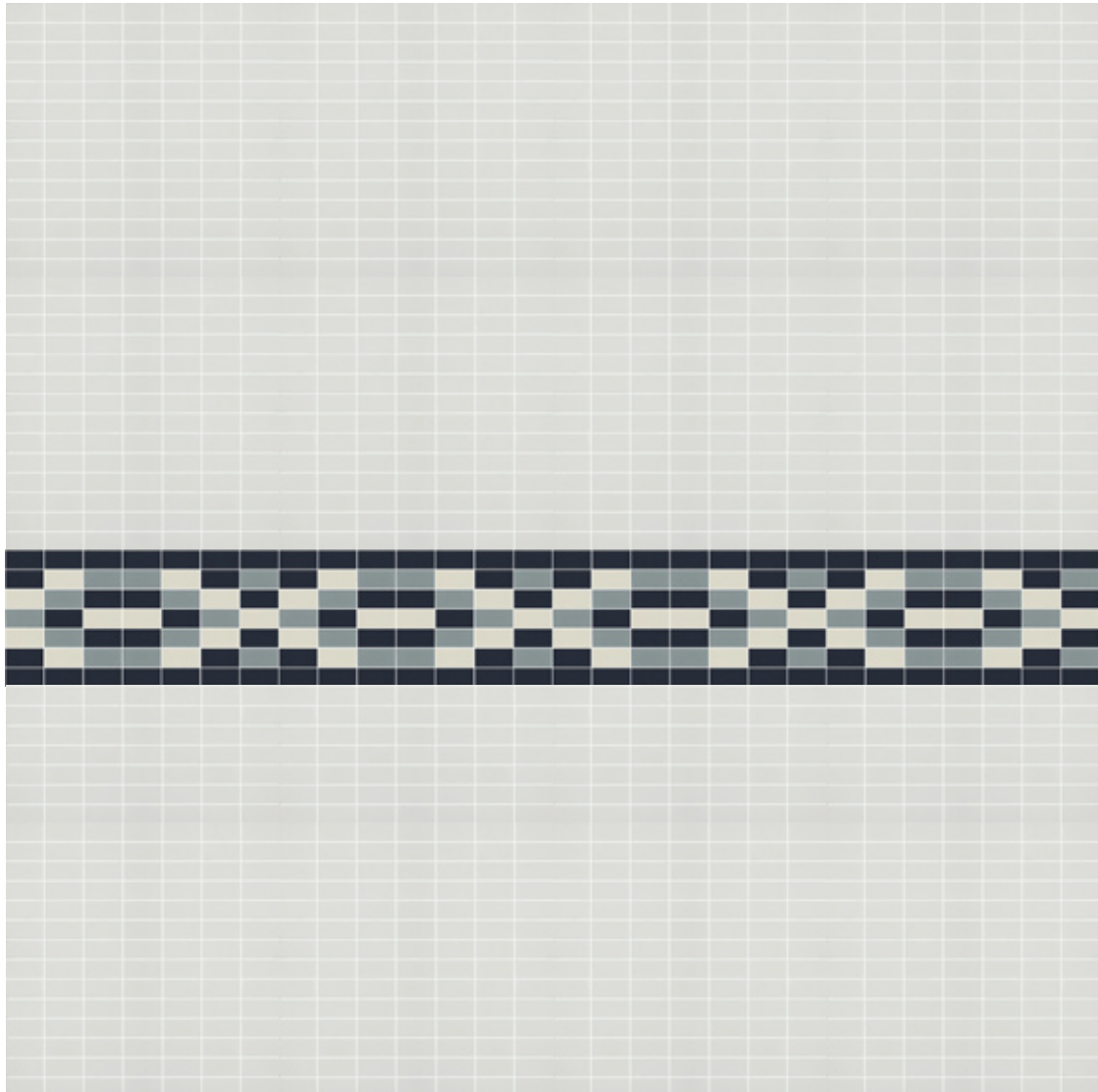
LINIEN 3



KREIS

CENEFAS CON LÍNEAS PURAS Y SENCILLAS.

BORDERING WITH PURE, SIMPLE LINES.



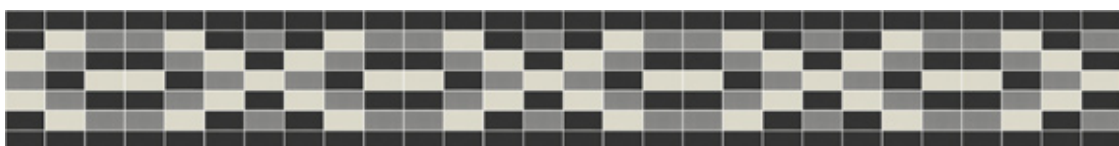
KREIS 1

568 569 573



KREIS 2

575 576 574



KREIS 3

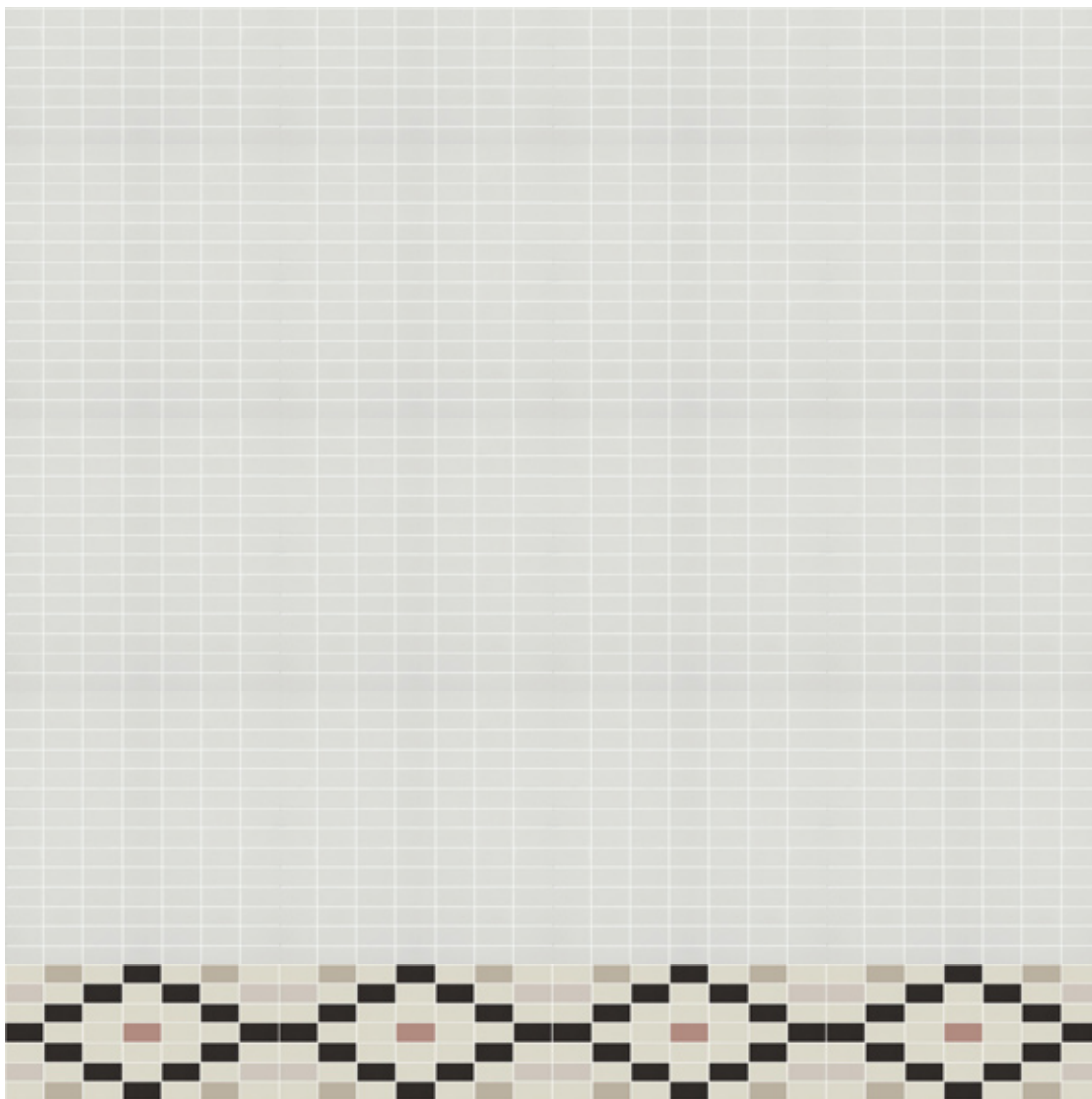
568 570 564



VOLANT

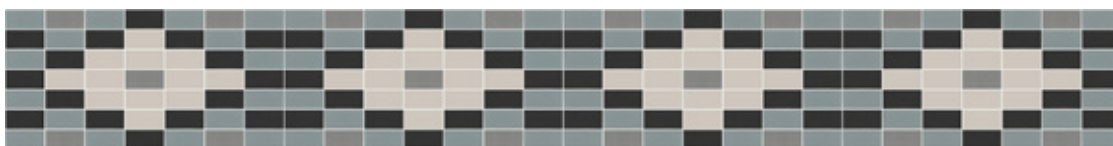
SUTILES CURVAS EN MOVIMIENTO

SUBTLE CURVES IN MOVEMENT.



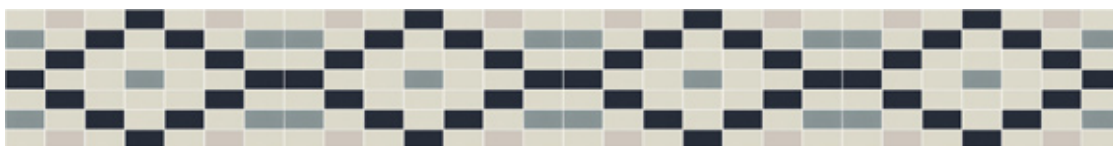
VOLANT 1

568 576 575 574



VOLANT 2

568 569 575 573



VOLANT 3

570 564 569 575



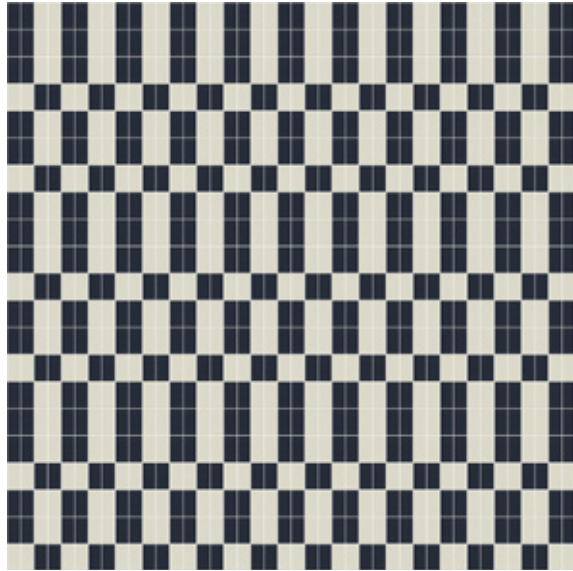


DIAGRAMM 1

■ ■
568 573

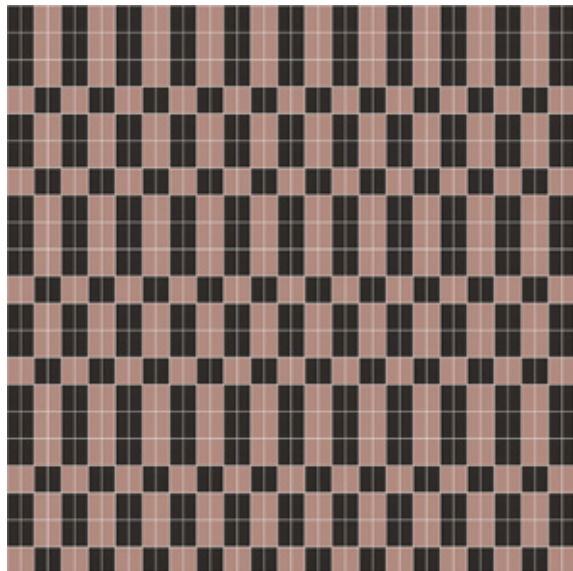


DIAGRAMM 2

■ ■
576 574

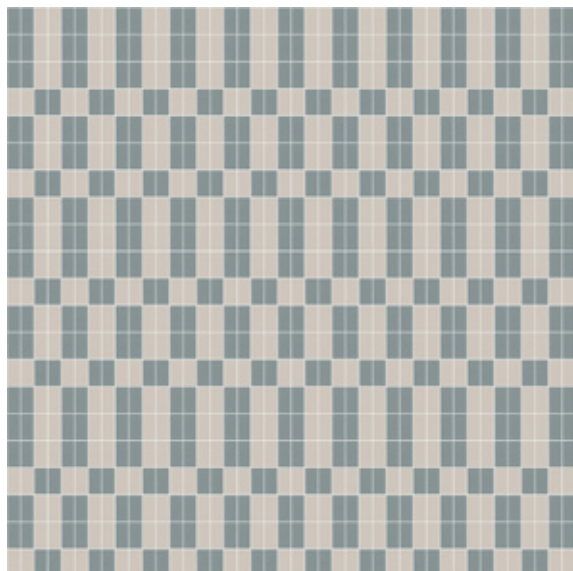


DIAGRAMM 3

■ ■
569 575

DIAGRAMM

UN PATRÓN ORDENADO
CON EFECTO HIPNÓTICO.

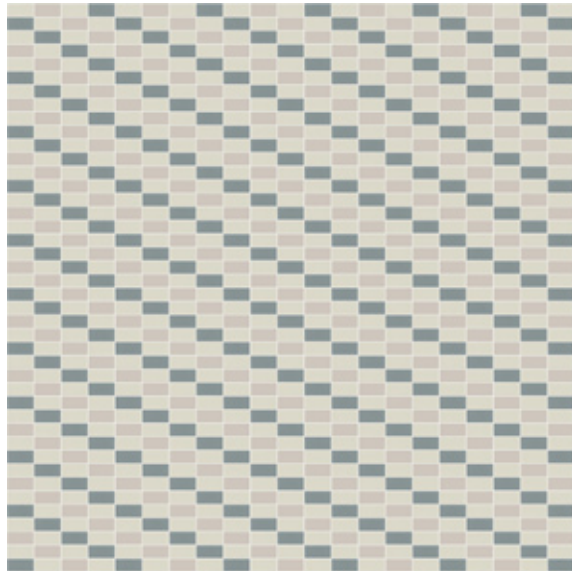
AN ORDERED DESIGN
WITH HYPNOTIC EFFECT.



20

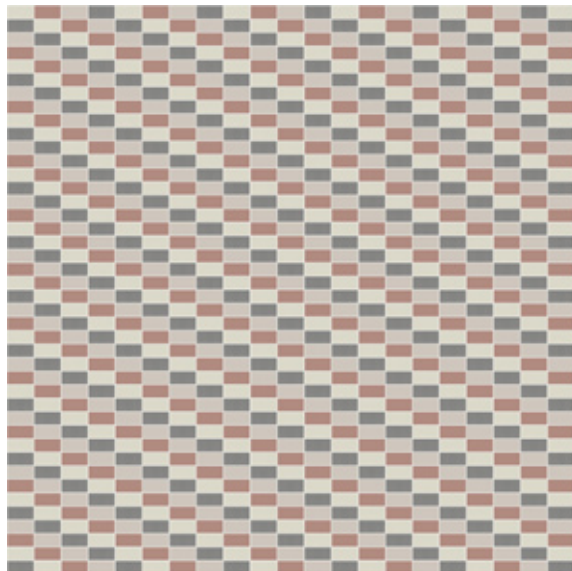
DIAGONALE

ELEGANTES MOTIVOS DINÁMICOS EN DIAGONAL.
ELEGANT AND DYNAMIC MOTIFS IN DIAGONAL.



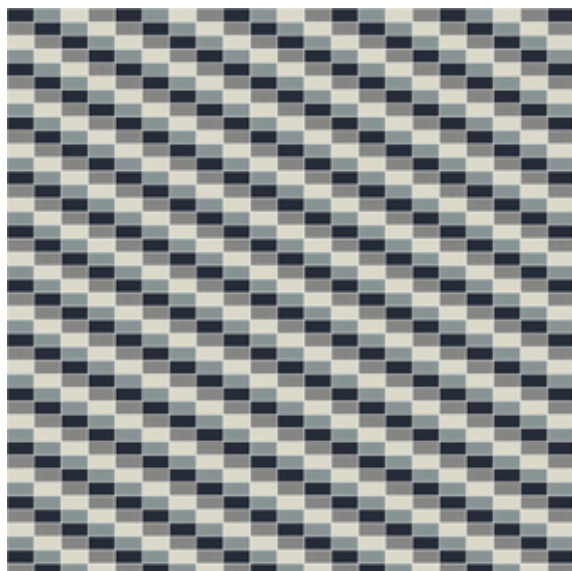
DIAGONALE 1

568 569 575



DIAGONALE 2

570 568 575 576



DIAGONALE 3

568 569 570 573



22



SPITZE

ATRATIVOS DISEÑOS GEOMÉTRICOS ENCADENADOS.
ATTRACTIVE GEOMETRIC DESIGNS IN A COMBINED PATTERN.

SPITZE 1

568 576 575 574



SPITZE 2

568 569 575 573



SPITZE 3

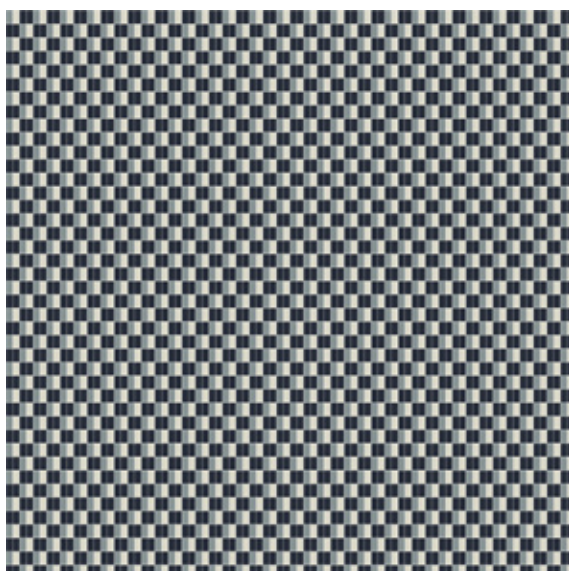
575 569 570 564



SCHACH

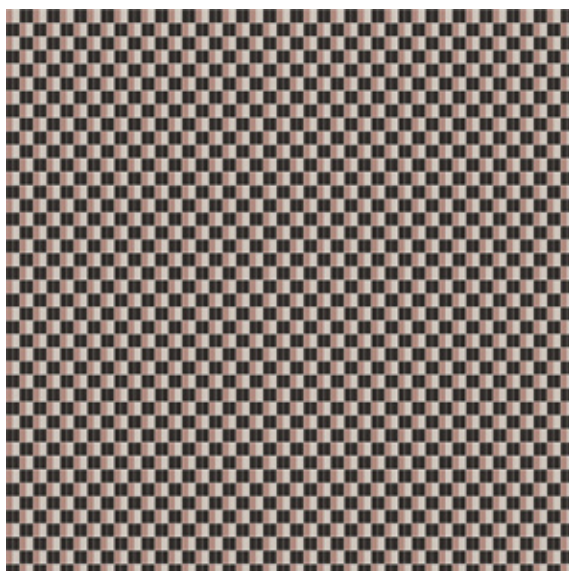
LA DIMENSIÓN Y EL CONTRASTE
DE UN JUEGO DE AJEDREZ.

THE DIMENSIONS AND CONTRAST
OF A CHECKERBOARD PATTERN.



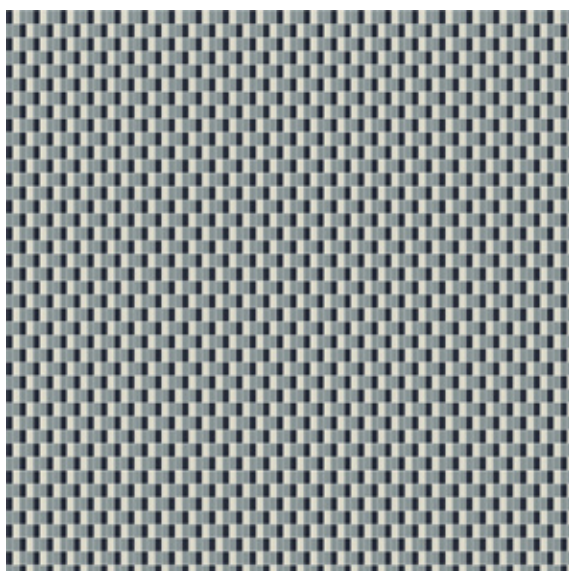
568 569 573

SCHACH 1



575 576 574

SCHACH 2



568 569 573

SCHACH 3



IKAT

LA SIMETRÍA Y EQUILIBRIO DE LOS ROMBOS.
THE SYMMETRY AND BALANCE OF RHOMBOIDS.



IKAT 2

568 576 575 574



IKAT 1

568 569 573



IKAT 3

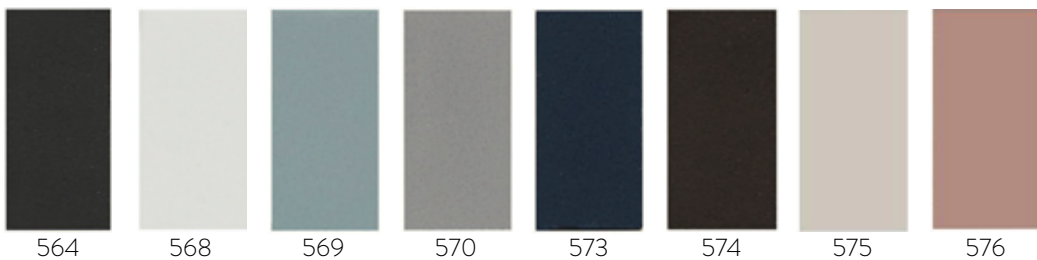
573 569 568

ÍNDICE DE MODELOS: // DESIGNS INDEX:

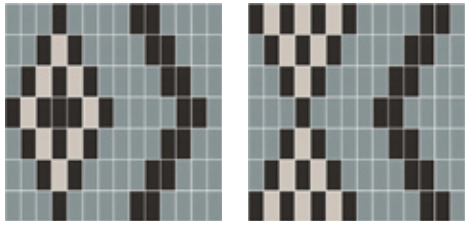
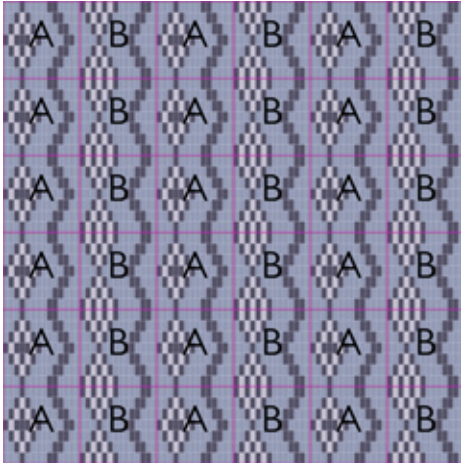
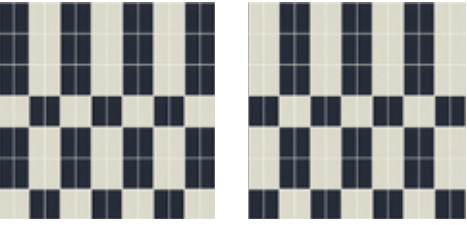
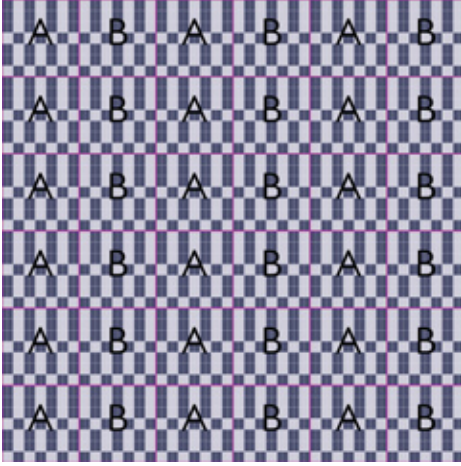

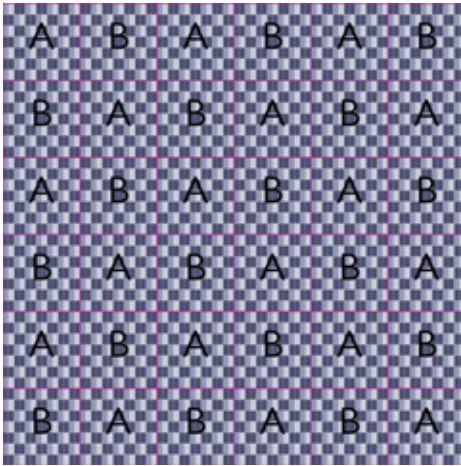
Todos los modelos **DOPPEL DESIGN** pueden personalizarse con cualquiera de los colores de la colección **DOPPEL**.

All the **DOPPEL DESIGN** models can be personalised using any colour from the **DOPPEL** collection.

Diseño / Referencia: Design / Reference:	Módulo(s) y Emplacado: Module(s) and Mounting:	Ejemplo de modulación de 2 x 2 m = 4 m ² Modulation example of 2 x 2 meters = 4 sq. m. meters				
 <p>KREIS (A)</p>	<table border="1" data-bbox="480 667 801 745"> <tr> <td>A</td> <td>A</td> <td>A</td> <td>A</td> </tr> </table> <p>1 módulo 1 module</p>	A	A	A	A	 <p>2 metros lineales ancho x 16,5 cm alto 2 lineal meters wide x 16,5cm high</p>
A	A	A	A			
 <p>VOLANT (A)</p>	<table border="1" data-bbox="480 925 801 1003"> <tr> <td>A</td> <td>A</td> <td>A</td> <td>A</td> </tr> </table> <p>1 módulo 1 module</p>	A	A	A	A	 <p>2 metros lineales ancho x 16,5 cm alto 2 lineal meters wide x 16,5cm high</p>
A	A	A	A			
 <p>LINIEN (A)</p>  <p>LINIEN (B)</p>	<table border="1" data-bbox="560 1296 721 1456"> <tr> <td>A</td> <td>A</td> </tr> <tr> <td>B</td> <td>B</td> </tr> </table> <p>2 módulos 2 modules</p>	A	A	B	B	
A	A					
B	B					
 <p>IKAT (A)</p>  <p>IKAT (B)</p>	<table border="1" data-bbox="560 1816 721 1975"> <tr> <td>A</td> <td>A</td> </tr> <tr> <td>B</td> <td>B</td> </tr> </table> <p>2 módulos 2 modules</p>	A	A	B	B	
A	A					
B	B					



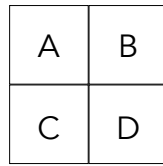
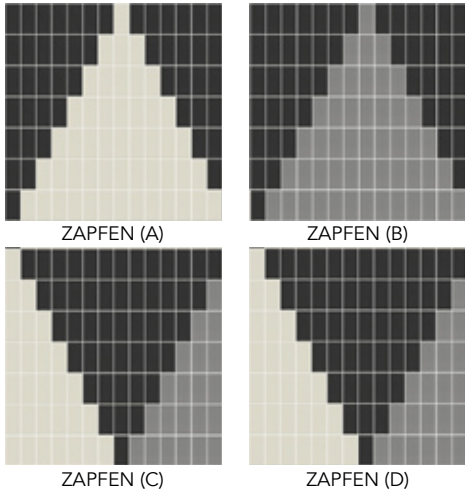
Visita la colección **DOPPEL**
Visit **DOPPEL** collection

Diseño / Referencia: Design / Reference:	Módulo(s) y Emplacado: Module(s) and Mounting:	Ejemplo de modulación de 2 x 2 m = 4 m ² Modulation example of 2 x 2 meters = 4 sq. m. meters				
 <p>WELLEN (A) WELLEN (B)</p>	<table border="1" data-bbox="651 775 810 931"> <tr> <td>A</td> <td>B</td> </tr> <tr> <td>A</td> <td>B</td> </tr> </table> <p>2 módulos 2 modules</p>	A	B	A	B	
A	B					
A	B					
 <p>DIAGRAMM (A) DIAGRAMM (B)</p>	<table border="1" data-bbox="651 1294 810 1451"> <tr> <td>A</td> <td>B</td> </tr> <tr> <td>A</td> <td>B</td> </tr> </table> <p>2 módulos 2 modules</p>	A	B	A	B	
A	B					
A	B					
 <p>SCHACH (A) SCHACH (B)</p>	<table border="1" data-bbox="651 1816 810 1973"> <tr> <td>A</td> <td>B</td> </tr> <tr> <td>B</td> <td>A</td> </tr> </table> <p>2 módulos 2 modules</p>	A	B	B	A	
A	B					
B	A					

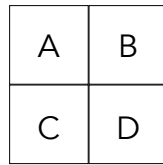
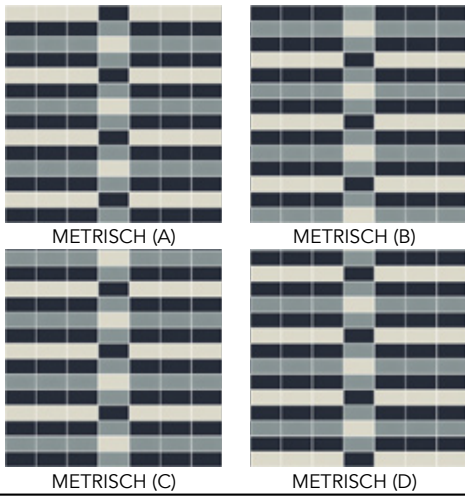
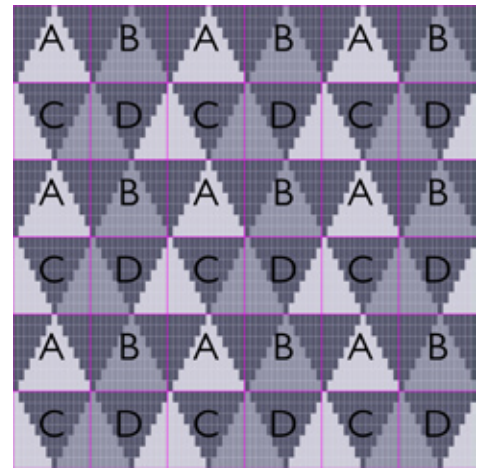
Diseño / Referencia:
Design / Reference:

Módulo(s) y Emplacado:
Module(s) and Mounting:

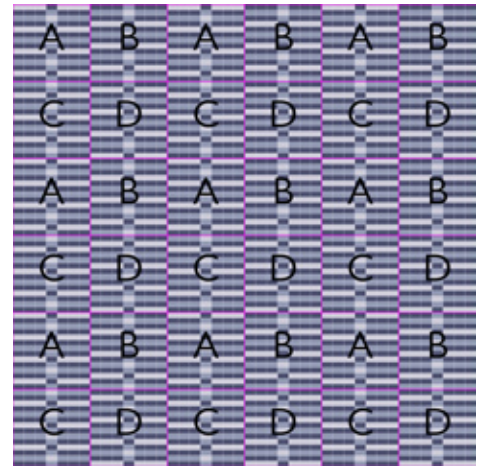
Modulación de 2 x 2 m = 4 m²
Modulation of 2 x 2 meters = 4 sq. m



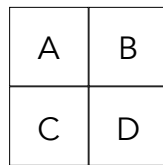
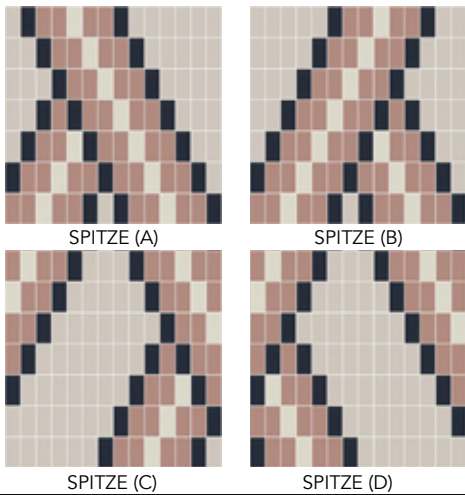
4 módulos
4 modules



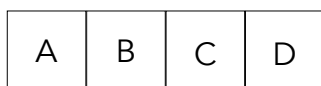
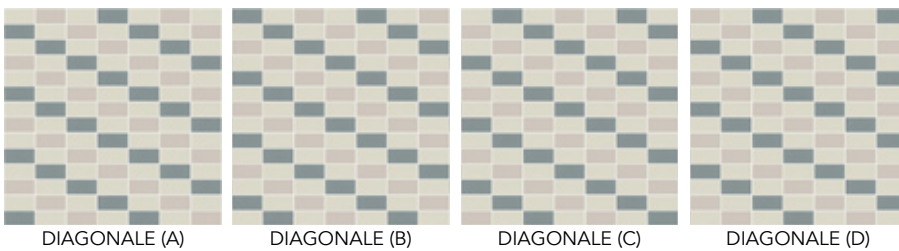
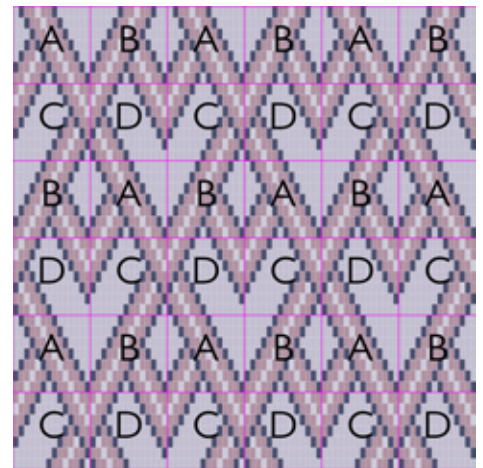
4 módulos
4 modules



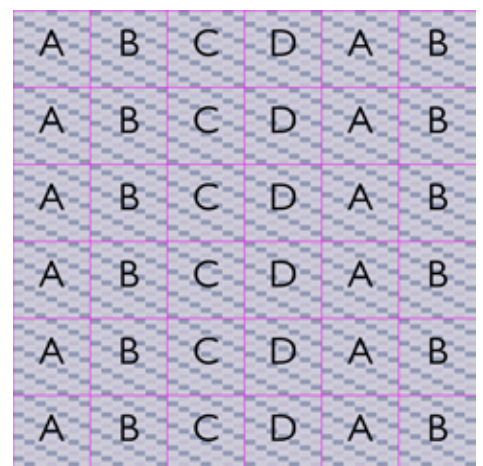
30



4 módulos
4 modules



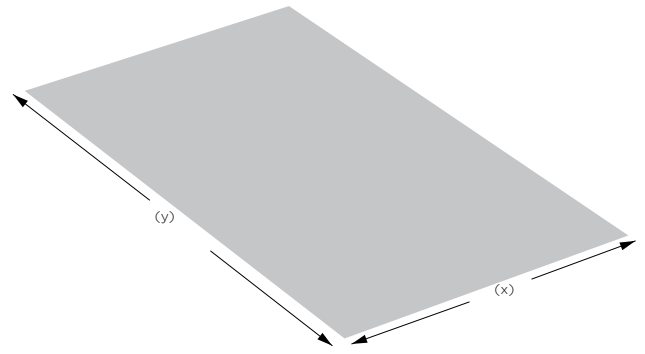
4 módulos // 4 modules



INSTRUCCIONES PARA REALIZAR TU PEDIDO: INSTRUCTIONS TO PLACE YOUR ORDER:

1-Toma las medidas exactas en obra y dibújalas sobre un plano.
Sé lo más preciso posible para evitar futuros contratiempos.

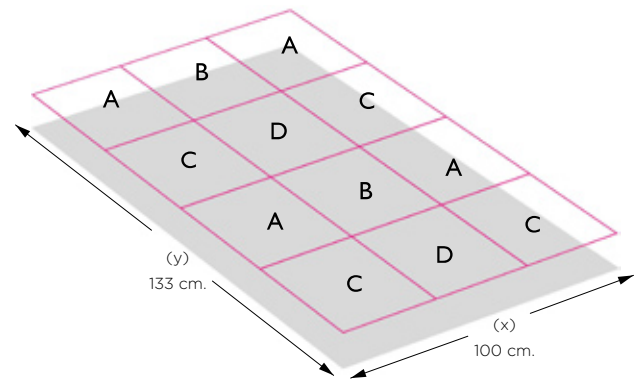
1- Take the exact measurements of the area to be covered and draw a diagram. Be as precise as possible to avoid problems in the future.



2- Distribuye las placas del módulo sobre la superficie a cubrir. Recuerda que suministramos todos los diseños a placa completa, es posible que te sobre material en los bordes.

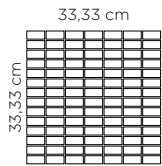
2- Lay out the sheets on the surface to be covered. Remember that the designs come in a complete sheet and so you may have extra material around the edges.

Ejemplo de empackado de modelo con 4 módulos:
Mounting example of a design made from 4 modules:

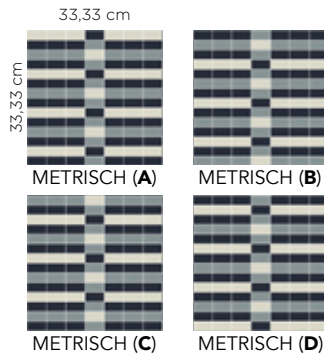


31

medidas placa individual:
single sheet measures:



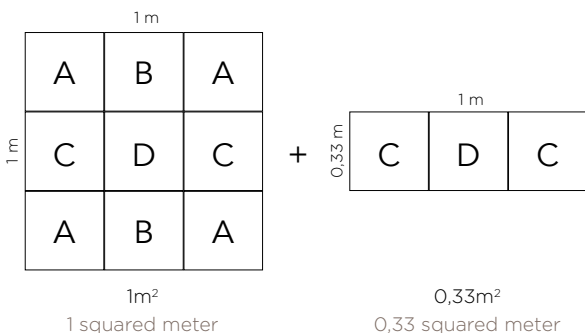
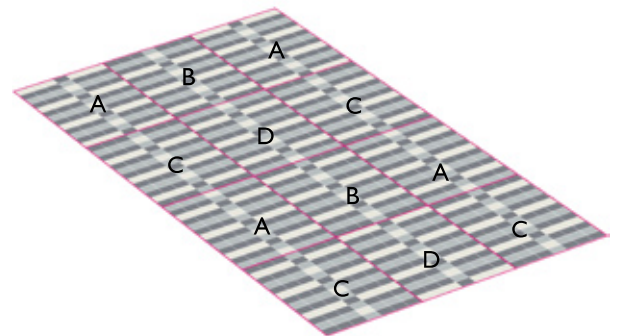
Modelo METRISCH (4 módulos):
METRISCH model (4 modules):



3- Calcula cuántas placas necesitas de cada módulo y los m² totales. Cada m² está compuesto por 9 placas.

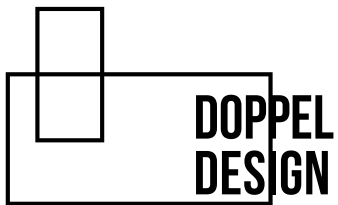
3- Calculate the number of sheets you will need of each module and the total area in m². Each m² consists of 9 sheets.

Ejemplo: mod. METRISCH
Example: METRISCH model



Placa A: 4 uds. Placa B: 2 uds.
Placa C: 4 uds. Placa D: 2 uds.
Placas totales: 12 uds.
M² totales: placas totales entre 9 = 12 / 9 = 1,33m²

Sheet A: 4 units Sheet B: 2 units
Sheet C: 4 units Sheet D: 2 units
Total sheets: 12 units
Total squared meters: total sheets divided by 9 = 12 / 9 = 1,33m²



**DOPPEL
DESIGN**

NUEVA COLECCIÓN NEW COLLECTION



hisbalit
mosaico

www.hisbalit.com



Visita la colección



Visit the collection